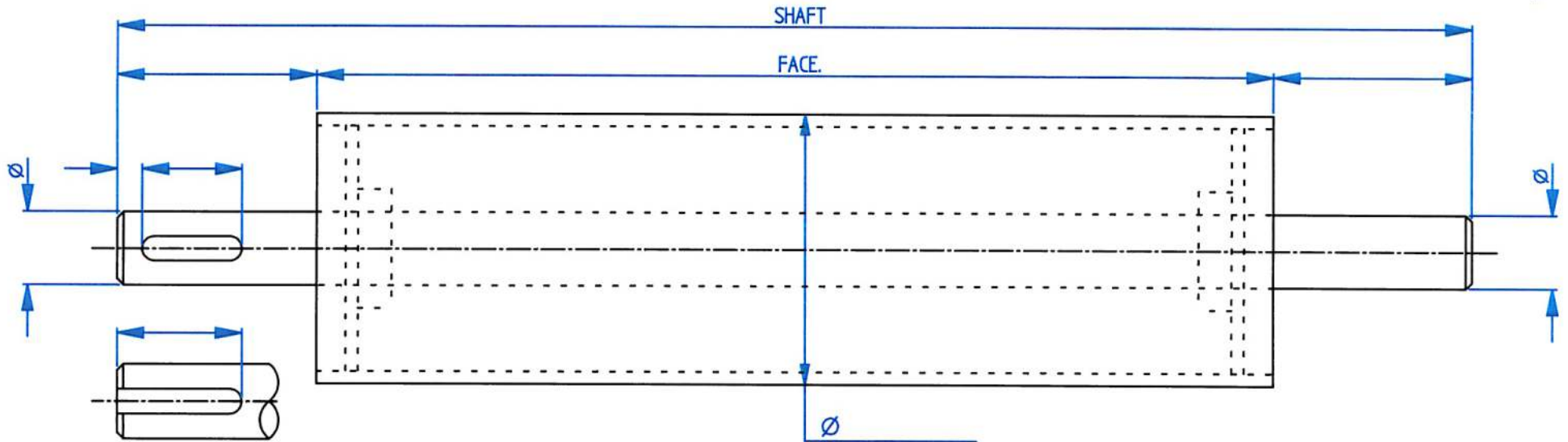


# ELCO CONVEYOR DRIVE / TAIL DRUMS

Elco Conveyors Ltd.  
 The Roller Centre, Spring vale Road, Darwen. BB3 2ES  
 Telephone: 01254 707036. Fax: 01254 704126.  
 Email: sales@elcoconveyors.com. Website: www.elcoconveyors.com



### TUBE MATERIAL

- MILD STEEL
- STAINLESS STEEL
- POLYPROPYLENE

### SHAFT MATERIAL

- MILD STEEL
- STAINLESS STEEL

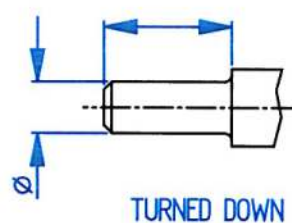
### SHAFT FIXING OPTIONS

- WELDED
- TAPER LOCK
- LOCKING ASSEMBLY
- DRILLED AND TAPPED M.....x.....mm LONG
- TURNED DOWN EACH END / ONE END SEE BELOW

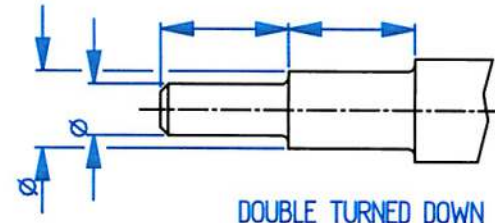
### PULLEY FINISH OPTIONS

- RUBBER LAGGING  $\varnothing$ ..... DIAMOND/PLAIN
- TUBE FINISH
- MACHINED CROWNED FACE
- MACHINED FLAT FACE
- GALVANISED

QUANTITY -



TURNED DOWN



DOUBLE TURNED DOWN

COMPANY:

NAME:

TEL No.

EMAIL ADDRESS